

# New Hampshire MMIS

Companion Guide to the 005010X221A  
Health Care Claim Payment/Advice (835)

Conduent EDI Solutions  
October 2025

© **2017** Conduent, Inc. All rights reserved. Conduent and Conduent Agile Star are trademarks of Conduent, Inc. and/or its subsidiaries in the United States and/or other countries.

Express permission to use the ASC X12 copyrighted materials has been granted.

# Preface

This Companion Guide to the v5010 ASC X12N Implementation Guides -Technical Report Type 3 (TR3) and associated errata adopted under HIPAA clarifies and specifies the data content when exchanging electronically with the New Hampshire MMIS. Transmissions based on this Companion Guide, used in tandem with the v5010 ASC X12N Implementation Guides (TR3), are compliant with both ASC X12N syntax and those guides. This Companion Guide is intended to convey information that is within the framework of the ASC X12N Implementation Guides (TR3) adopted for use under HIPAA. The Companion Guide is not intended to convey information that in any way exceeds the requirements or usages of data expressed in the Implementation Guides (TR3).

# Table of Contents

|  |           |
|--|-----------|
| <b>1 Introduction.....</b>   | <b>1</b>  |
| Scope .....  | 1         |
| Overview.....  | 2         |
| References.....  | 2         |
| Additional Information.....  | 2         |
| <b>2 Getting Started.....</b>  | <b>3</b>  |
| Working with New Hampshire Medicaid.....                                     | 3         |
| Trading Partner Registration.....  | 3         |
| Testing Overview .....   | 4         |
| <b>3 Testing with the New Hampshire MMIS.....</b>                            | <b>4</b>  |
| <b>4 Connectivity with the New Hampshire MMIS.....</b>                       | <b>6</b>  |
| Process Flows.....   | 6         |
| Editing and Validation Flow Diagram .....                                    | 6         |
| Transmission Administration Procedures.....                                  | 7         |
| Re-Transmission Procedures .....   | 8         |
| Communication Protocol Specifications.....                                   | 8         |
| Web Portal .....   | 8         |
| Secure FTP.....  | 14        |
| Passwords .....  | 14        |
| <b>5 Contact Information.....</b>  | <b>16</b> |
| EDI Customer Service.....  | 16        |
| EDI Technical Assistance.....  | 16        |
| Provider Services Number.....  | 16        |
| Applicable Web site/E-mail.....  | 16        |
| <b>6 Control Segments/ Envelopes.....</b>                                    | <b>18</b> |
| ISA-IEA.....   | 18        |
| GS-GE.....   | 18        |
| ST-SE.....   | 19        |
| <b>7 New Hampshire Medicaid Specific Business Rules and Limitations.....</b> | <b>20</b> |
| <b>8 Acknowledgements and/or Reports.....</b>                                | <b>21</b> |

|  |           |
|--|-----------|
| Transmission Errors and Reports.....               | 21        |
| <b>9 Trading Partner Agreements.....</b>           | <b>22</b> |
| Trading Partners .....                             | 22        |
| <b>10 Transaction Specific Information .....</b>   | <b>23</b> |
| ASC X12N 835 Health Care Claim Payment/Advice..... | 23        |
| EFT and ERA Re-association:.....                   | 28        |
| <b>Appendices.....</b>                             | <b>29</b> |
| Implementation Checklist .....                     | 29        |
| Business Scenarios.....                            | 29        |
| Transmission Examples .....                        | 29        |
| Frequently Asked Questions .....                   | 29        |
| Change Summary.....                                | 30        |

# 1 Introduction

This 835 Companion Guide is intended for Trading Partner use in conjunction with the ASC X12N 835 National Electronic Data Interchange Transaction Set Implementation Guide. The ASC X12N Implementation Guide can be accessed at <http://store.x12.org/store/healthcare-5010-consolidated-guides>.

This Companion Guide outlines the procedures necessary for engaging in Electronic Data Interchange (EDI) with the New Hampshire MMIS and specifies data clarification where applicable. [Section 10 Transaction Specific Information](#) contains provider data clarifications for fields and values that have changed.

Transaction specific data will be detailed using a table with the following information included (if applicable):

- TR3 Page
- Loop
- Segment
- Data Element
- Industry Name
- Comments

## Scope

This Companion Guide is intended for use by New Hampshire Medicaid Trading Partners for the retrieval of the X12N 835 transactions from Conduent. This Companion Document is to be used in conjunction with the 835 Implementation Guide and TR3. Conduent is the Fiscal Agent for New Hampshire Department of Health and Human Services (DHHS). Conduent will accept and process X12N transactions on behalf of New Hampshire Medicaid.

Conduent provides connectivity for the flow of medical information and data between medical providers, facilities, vendors, claim payment agencies, clearinghouses and the Front-end Online Transaction Processor (OLTP). Beyond the receipt and delivery of this data, Conduent EDI Solutions provides translation to and from ASC X12N standard formats.

Please refer to [Section 4 Connectivity with the New Hampshire MMIS](#) for more information regarding transmission methods.

## Overview

This Companion Guide is divided into 10 Sections. Each section will describe the process or requirement that each Trading Partner must complete to submit and receive X12N transactions for New Hampshire Medicaid.

Each section will provide the needed information of how Trading Partners will be required to complete successful transmissions to and from the New Hampshire Medicaid MMIS.

This Companion Guide will provide contact information for obtaining assistance from the New Hampshire Medicaid MMIS. As well as data clarifications, including New Hampshire Medicaid specific data requirements.

## References

This document serves as a companion to the ASC X12N Implementation Guides (TR3) as adopted under HIPAA. These can be accessed at:

<http://store.x12.org/store/healthcare-5010-consolidated-guides>

## Additional Information

For more information on New Hampshire Medicaid EDI services for providers, including provider enrollment and claim transaction information, please visit: <http://nhmmis.nh.gov>

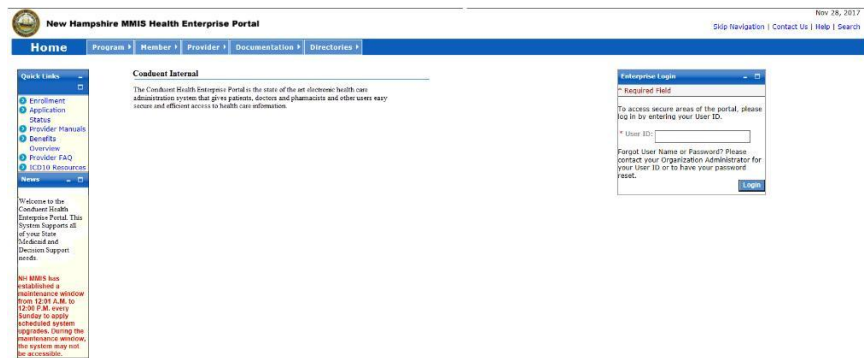
# 2 Getting Started

## Working with New Hampshire Medicaid

We provide availability for transaction transmission and download retrieval 24 hours a day, seven days a week. This availability is subject to scheduled downtime. It is operational policy to schedule preventative maintenance periods on weekends or after 9:00 p.m. Eastern Standard Time. Conduent EDI Solutions notifies the New Hampshire Medicaid Trading Partners of outages or scheduled maintenance periods.

Currently the system maintenance window is Sunday 12:01 am – 12:00 pm Eastern Standard Time (EST). In the event of unscheduled downtime, Conduent EDI Solutions will notify the New Hampshire Medicaid Trading Partners via notifications and/or Web portal banner messages, and will resolve the outage as expeditiously as possible.

For any non-routine downtime planned for the MMIS system, a notification message will be displayed in advance on the login screen (shown below) from the MMIS web-portal to the providers



## Trading Partner Registration

All entities that send electronic transactions to Conduent EDI Solutions for processing and retrieve reports and responses must enroll as EDI Trading Partners. The completed Trading Partner enrollment application provides the Conduent New Hampshire Provider Relations Unit the information necessary to assign a Login Name, Login ID, and Trading Partner ID, which are required to send or retrieve electronic transactions. The Trading Partner enrollment application is available on the New Hampshire Medicaid Web site at <http://nhmmis.nh.gov>. Click on Provider Enrollment in the Quick Links pod to get to the Trading Partner enrollment application. The direct URL to the provider enrollment page is: <https://nhmmis.nh.gov/portals/wps/portal/ProviderEnrollment>

## Testing Overview

All new Trading Partners before they are approved for production will use the Test NH Health Enterprise Web Portal to test. The test web site provides accurate validation of HIPAA transactions (Type 1 EDI Syntax, Type 2 HIPAA Syntax, and some Type 7 NH Trading Partner Specific). Conduent EDI Solutions requires transaction testing with all enrolling Trading Partners for NH Medicaid.

Once a Trading Partner has successfully enrolled for New Hampshire Medicaid and has communicated with a Conduent Business Analyst, the Trading Partner may begin the testing process.

# 3 Testing with the New Hampshire MMIS

Before submitting production files through Conduent EDI Solutions, the Trading Partner must submit three valid test files for each transaction type. If the Trading Partner has received a test status of “Accepted,” then the Conduent Business Analyst will contact the Trading Partner and update the Trading Partner status to production.

These tests verify a Trading Partner’s ability to submit a specific transaction type containing valid data in the required format. Trading Partners are encouraged to include a minimum of 10 unique transactions per test file to ensure more comprehensive testing. The NH Medicaid supported inbound transaction types are X12N 270, X12N 276, X12N 278, X12N 837P, X12N 837I, and X12N 837D. Changes to the X12N formats may require additional testing.

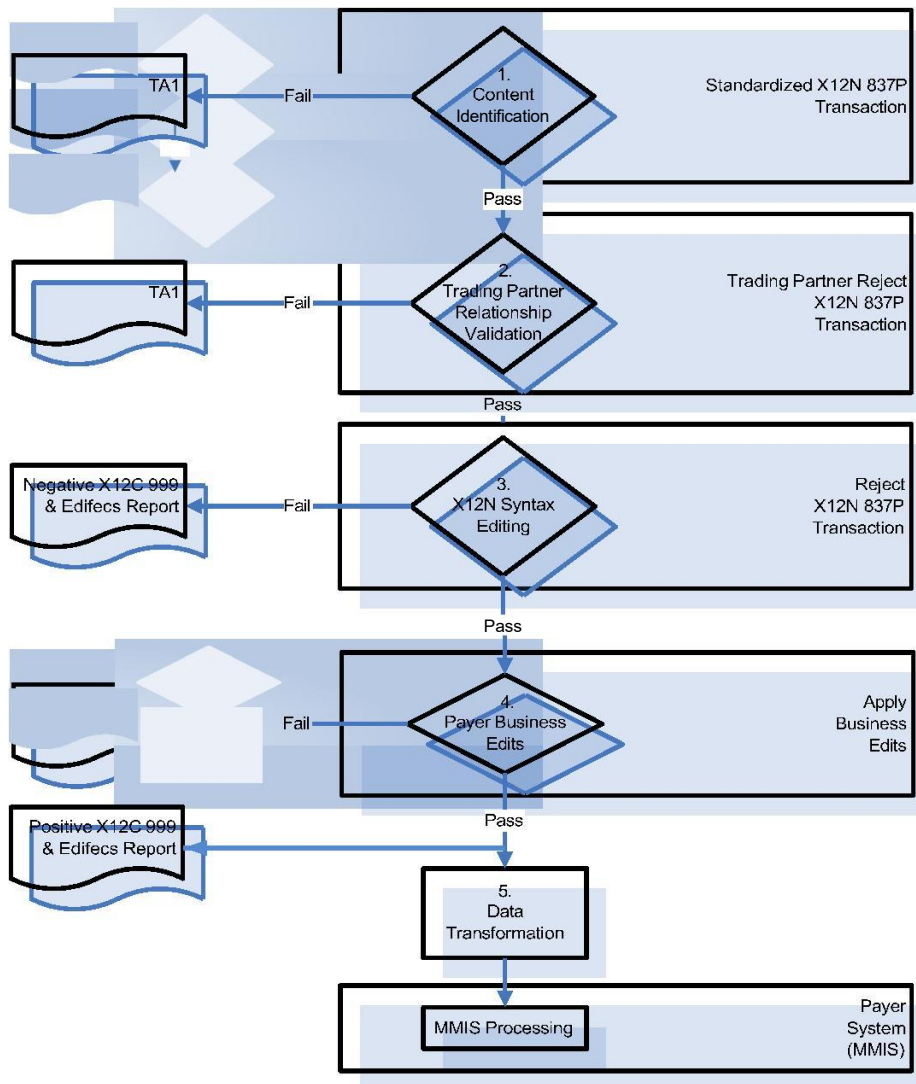
Should Trading Partners receive a test status of “Rejected,” then Trading Partners should download and review the X12C 999, ERROR Report. They will need to correct and resubmit their test file(s) until the file receives a status of “Accepted.” If Trading

Partners require further assistance with download responses or resolving errors, please contact the assigned Conduent EDI Business Analyst by email at [NHMMISEDI@Conduent.com](mailto:NHMMISEDI@Conduent.com).

# 4 Connectivity with the New Hampshire MMIS

## Process Flows

### Editing and Validation Flow Diagram



**Legend:**

1. **Content Identification:** Data identification is attempted. If the data is corrupt or intended for another resource, an email notice will be sent to the Conduent EDI Business Analyst for review and follow-up with the submitter. If the data can be identified, it is then checked for Trading Partner Relationship Validation.
2. **Trading Partner Relationship Validation:** The Trading Partner information is validated. If the Trading Partner information is invalid, a TA1 (Interchange Acknowledgement) will be forwarded to the Conduent EDI Solutions Business Analyst center for review and follow-up with the submitter. If the Trading Partner relationship is valid, the data will be passed for X12N syntax validation.
3. **X12N Syntax Validation:** A determination will be made as to whether the data is ASC X12N. An X12C 999 (Implementation Acknowledgement) will be sent to the mailbox of the submitter. The X12C 999 contains **ACCEPT, REJECT or PARTIAL** status. If the file contained syntactical errors, the segment(s) and element(s) where the error(s) occurred will be reported in the X12C 999, and will be further detailed in the EDIFECs Report.
4. **Payer Business Edits:** If the data passes X12N syntax validation, payer business edits, such as the NPI "check digit" validation" will be performed. Any errors found will be returned in an X12C 999, with details explaining the segment(s) and element(s) where the error(s) occurred. The X12C 999 will be sent to the Mailbox System for submitter retrieval.
5. **Data Transformation:** Inbound X12N data is translated to XML format, and passed to the New Hampshire MMIS for processing.

## Transmission Administration Procedures

To receive an 835, enrolled New Hampshire Trading Partners will submit X12N 837 transaction data to Conduent EDI Solutions for processing. Conduent validates submission of X12N format(s). The TA1 Interchange Acknowledgement reports the syntactical analysis of the interchange header and trailer. If the data (Interchange Envelope) is invalid, the file will be rejected. If the Trading Partner relationship does not exist (a missing or invalid Trading Partner ID) a TA1 will not be generated because the relationship does not exist within the NH Medicaid EDIFECs Trading Partner Management Database. An email will be sent to the Conduent EDI Business analyst for review and follow-up with the submitter

If you have questions or require assistance with your TA1 or X12C 999 please contact your Conduent Fiscal Agent EDI Business Analyst at [NHMMISED@Conduent.com](mailto:NHMMISED@Conduent.com). Please include your Trading Partner ID and telephone number in your email.

# Re-Transmission Procedures

## Transmission/Production Issues

When file transmission or technical production issues occur, which could require the re-submission of files, please contact the Conduent New Hampshire Provider Relations Unit at **1 (866) 291-1674**.

Please have the following information available when calling the Conduent New Hampshire Provider Relations Unit regarding transmission and production issues.

- Trading Partner ID
- Web Portal Login Name (if using the Web Portal)
- Secure FTP ID (if using Secure FTP)

## Communication Protocol Specifications

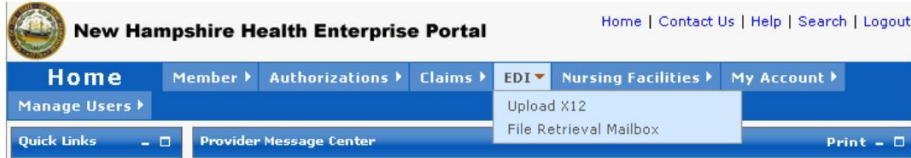
New Hampshire Trading Partners can submit X12N files and download files such as the X12N 835, X12N 277CA, TA1, and X12C 999 via the NH Health Enterprise MMIS Web Portal and Secure FTP.

### Web Portal

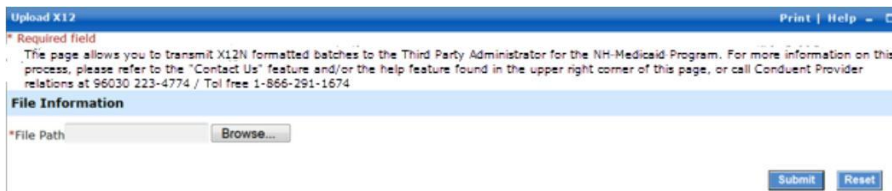
The Web Portal method allows a Trading Partner to initiate the retrieval of a file from Conduent EDI Solutions. A Trading Partner must be an authenticated portal user who is either an active New Hampshire Provider, or an authorized representative of the Provider. The Trading Partner accesses the Web Portal via a Web browser and is prompted for a login and password. Trading Partners may select files for download to their PC or work environment using the “Browse” function. All 835 files retrieved will meet the ASC X12N 835 standard.

## Web Portal Upload Procedures

1. In your Web browser, log on to the **New Hampshire MMIS Health Enterprise Portal** at <http://nhmmis.nh.gov>.
2. From the **EDI** menu, select **Upload X12**.



3. Navigate to the file you wish to upload using the Browse button, or type the path and filename into the File Information field.

The screenshot shows the "Upload X12" form. At the top, it says "Upload X12" and "Print | Help". Below that, there is a "Required field" label and a paragraph of text: "The page allows you to transmit X12N formatted batches to the Third Party Administrator for the NH-Medicaid Program. For more information on this process, please refer to the 'Contact Us' feature and/or the help feature found in the upper right corner of this page, or call Conduent Provider relations at 96030 223-4774 / Toll free 1-866-291-1674". The "File Information" section has a label "\*File Path" and a "Browse..." button. At the bottom right, there are "Submit" and "Reset" buttons.

4. Click **Submit**. Information on the file submitted is displayed in the **Upload Completed** screen.

The screenshot shows the "Upload X12 Complete" confirmation screen. It has a blue header with "Upload X12 Complete" and "Print | Help". The main content area contains the text: "File was successfully received and is being processed. Please check for a confirmation report in your mailbox." Below this text are two buttons: "Upload Another File" and "Message Center".

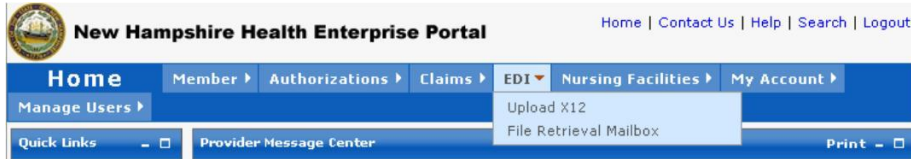
5. To retrieve the file confirmation, click on the **Message Center** button to go to your mailbox.

## Web Portal Data Retrieval Procedures

The Web Portal allows a Trading Partner to initiate file retrieval. Once logged into the Provider Secure Homepage, multiple functions such as File Retrieval are available.

### Downloading Files from the Web Portal

1. In your Web browser, log on to the **New Hampshire MMIS Health Enterprise Portal** at <http://nhmmis.nh.gov>
2. From the **EDI** menu, select **File Retrieval Mailbox**.

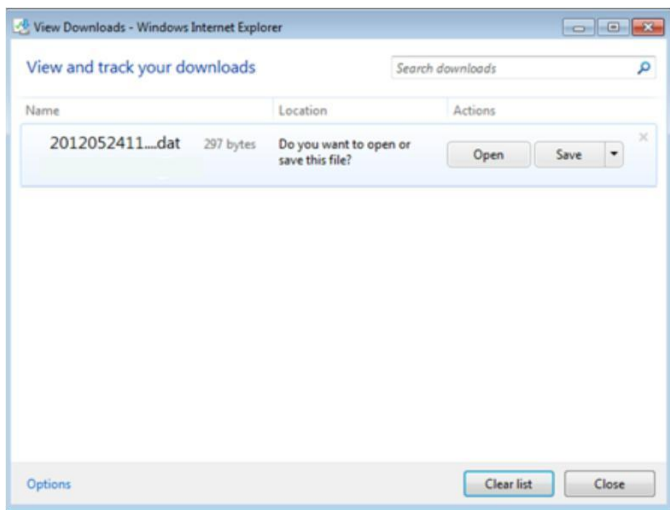


3. Select the **X12** radio button; select a file type; and if desired, enter beginning and end dates for the search.

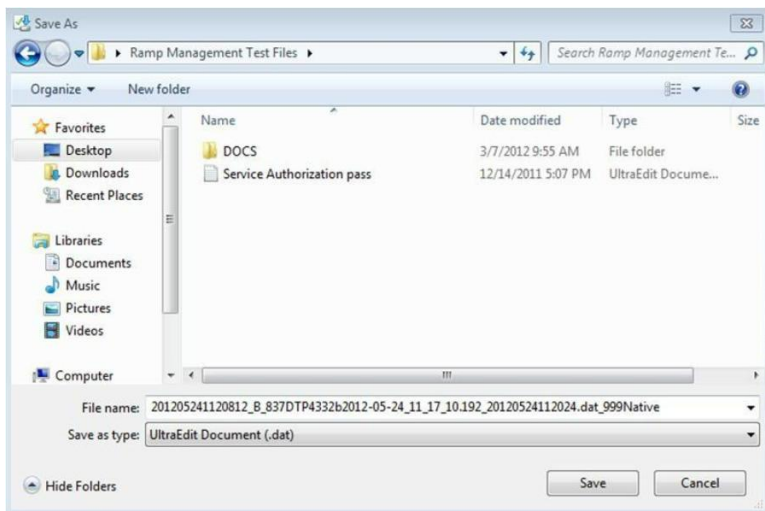
4. Click the **Search** button. The **Results** view displays files matching the search criteria. From the **Results** view, click the Creation Date of the file for downloads.  
**Note:** After the first time selecting the files, the **Show All** box needs to be checked to retrieve them again

| Creation Date | Filename  | File Size |
|---------------|---|-----------|
| Sep 06, 2012  | 201209061025750_B_201209061025538_B_270_TP045_20120906102509_20120906102509.dat_999Native.dat   | 296       |
| Sep 06, 2012  | 201209061025818_B_201209061025729_B_278_TP045_2_20120906102510_20120906102514.dat_999Native.dat   | 279       |
| Sep 06, 2012  | 201209061025766_B_201209061025683_B_276_TP045_2_20120906102510_20120906102510.dat_999Native.dat   | 279       |
| Sep 06, 2012  | 201209061025251_B_201209061025184_B_837TP045_20120906102511_20120906102511.dat_999Native.dat  | 296       |
| Sep 06, 2012  | 201209061025849_B_201209061025822_B_837D_TP045_2_20120906102510_20120906102514.dat_999Native.dat  | 333       |
| Sep 06, 2012  | 201209060745844_B_201209060745662_B_InvalidProv_20120906074505_20120906074505.dat_999Native.dat   | 318       |
| Sep 06, 2012  | 201209060740935_B_201209060740475_B_ProfInvalid_20120906074006_20120906074006.dat_999Native.dat   | 296       |
| Sep 06, 2012  | 201209060720439_B_201209060720133_B_ProfInvalid_20120906072004_20120906072004.dat_999Native.dat   | 296       |
| Sep 06, 2012  | 201209060715584_B_201209060715210_B_LFInpt_20120906071508_20120906071508.dat_999Native.dat  | 318       |
| Sep 06, 2012  | 201209060428407_B_201209060428037_B_201209050839111_B_201209050839339_B_Prof_McarIns1_20120905083915_20120905083922.dat_20120906042817_20120906042817.dat_999Native.dat | 296       |

5. Click **Save**, to save the file to your PC.



6. Specify a path for download, and click **Save** again.



## Secure file transfer

Secure file transfer is an appropriate alternative to the New Hampshire Web Portal for large volume Trading Partners (i.e. files in excess of 10MB each). For submitting and retrieving files via Secure file transfer, access to the Conduent DMZDMZ site (powered

by MOVEit TRANSFERTRANSFER®) is available free of charge to Trading Partners. It should be noted that the Conduent DMZ site is completely separate from New Hampshire Medicaid. Trading partners may use the separate secured Web site for submission and retrieval of files, or any secured FTP product that is compatible with MOVEit TRANSFERTRANSFER. See [MOVEit-Compatible FTP Applications](#).

## Secure file transfer Setup and Support

Secure file transfer setup will usually occur during Trading Partner Enrollment. If the Trading Partner wishes to create a Secure file transfer account, or requires additional support (i.e. account becomes locked or experiences connectivity issues), the Trading Partner should contact the Conduent New Hampshire Provider Relations Unit at **1 (866) 291-1674** (toll-free) or at **(603) 223-4774** (local).

**Note:** Secure file transfer setup is separate from Trading Partner Enrollment, but still coordinated through the Conduent New Hampshire Provider Relations Unit. The Provider Relations Unit may request additional information not obtained during Trading Partner Enrollment during Secure file transfer setup.

Trading Partners set up for submission and/or retrieval of files via the Secure file transfer mechanism will receive connectivity details from the Provider Relations Unit once setup is complete. This information will include login credentials, policies concerning passwords, file retention, and basic information on site navigation.

## MOVEit TRANSFERTRANSFER

MOVEit TRANSFERTRANSFER® is a software product that manages logins, folders, and data as an Internet-exposed secured landing zone. Only secured communications protocols may be used to access the TRANSFERTRANSFER. These include HTTPS, SFTP, and FTPS. FTPS is being phased out as it is considered less secure and is more difficult to manage with firewalls. Data is stored in encrypted format while residing on the TRANSFERTRANSFER.

There are two methods for accessing MOVEit TRANSFERTRANSFER:

1. Uploading files through a secure Web site <https://secureft.services.conduent.com/>
2. Sending and receiving files via a Secure file transfer client. MOVEit Freely® is a free Secure file transfer client available for download at <http://www.standardnetworks.com>.

## MOVEit-Compatible FTP applications

| MOVEit-Compatible FTP application   |  |
|---|--|
| HTTPS (HTTP over SSL) Clients   | SSH2 SFTP and SCP2 Clients   |
| <b>cURL</b> (downloads only) <ul style="list-style-type: none"> <li>▪ AIX; AmigaOS; BeOS; DOS; DragonFly BSD; FreeBSD; HP-UX; Linux; NetBSD; NetWare; OpenBSD;</li> </ul> | <b>Cyberduck</b> <ul style="list-style-type: none"> <li>▪ OS X v.10.3 or higher</li> </ul> <b>Cyclone Commerce Interchange</b> |

|  |   |
|--|---|
| <p>OS/2; OS X; QNX; RISC OS; Solaris; SunOS; Tru64 UNIX; UNIXware; VMS; Windows</p> <p><b>Internet Explorer Web Browser</b></p> <ul style="list-style-type: none"> <li>Macintosh, Windows</li> </ul> <p><b>Firefox Web Browser</b></p> <ul style="list-style-type: none"> <li>any supported OS</li> </ul> <p><b>MOVEit Central</b></p> <p>Windows Vista Business Ed., 2003, XP Professional, 2000 Server</p> <p><b>MOVEit Central API Java Class</b></p> <ul style="list-style-type: none"> <li>Windows Vista Business Ed., 2003, XP Professional, 2000 Server</li> </ul> <p><b>MOVEit Central API Windows COM Component</b></p> <ul style="list-style-type: none"> <li>Windows Vista Business Ed., 2003, XP Professional, 2000 Server</li> </ul> <p><b>MOVEit TRANSFERTRANSFER API Java Class</b></p> <ul style="list-style-type: none"> <li>any OS with Java v.1.4 or higher</li> </ul> <p><b>MOVEit TRANSFERTRANSFER API Windows COM Component</b></p> <ul style="list-style-type: none"> <li>Windows Vista Business Ed., 2003, XP, 2000, NT 4.0</li> </ul> <p><b>MOVEit Wizard ActiveX Plugin</b></p> <ul style="list-style-type: none"> <li>Internet Explorer Windows</li> </ul> <p><b>MOVEit Wizard Java Plugin</b></p> <ul style="list-style-type: none"> <li>Firefox Linux and Windows; Mozilla Linux and Windows; Netscape Linux and Windows; Opera Linux and Windows; Safari OS X</li> </ul> <p><b>MOVEit Xfer Java</b></p> <ul style="list-style-type: none"> <li>Any OS with Java v.1.4 or higher</li> </ul> <p><b>MOVEit Xfer Windows</b></p> <ul style="list-style-type: none"> <li>Windows Vista Business Ed., 2003, XP, 2000, ME, 98, NT</li> </ul> <p><b>Mozilla Web Browser</b></p> <ul style="list-style-type: none"> <li>any supported OS</li> </ul> <p><b>Netscape Navigator Web Browser</b></p> <ul style="list-style-type: none"> <li>Linux, Macintosh, Windows</li> </ul> <p><b>Opera Web Browser</b></p> <ul style="list-style-type: none"> <li>any supported OS</li> </ul> <p><b>Safari Web Browser</b></p> <ul style="list-style-type: none"> <li>OS X</li> </ul> | <ul style="list-style-type: none"> <li>Solaris</li> </ul> <p><b>FileZilla</b></p> <ul style="list-style-type: none"> <li>Windows</li> </ul> <p><b>F-Secure SSH (including SCP2)</b></p> <ul style="list-style-type: none"> <li>Solaris, UNIX, Windows</li> </ul> <p><b>Fugu</b></p> <ul style="list-style-type: none"> <li>OS X v.10.3 or higher</li> </ul> <p><b>IBM Ported Tools (OpenSSH)</b></p> <ul style="list-style-type: none"> <li>z/OS</li> </ul> <p><b>Ipswitch WS_FTP Pro</b></p> <ul style="list-style-type: none"> <li>Windows</li> </ul> <p><b>J2SSH</b></p> <ul style="list-style-type: none"> <li>Java</li> </ul> <p><b>MacSSH</b></p> <ul style="list-style-type: none"> <li>OS X v.10.3 or higher</li> </ul> <p><b>Magnetk sftpdrive</b></p> <ul style="list-style-type: none"> <li>Windows</li> </ul> <p><b>MOVEit Central</b></p> <ul style="list-style-type: none"> <li>Windows Vista Business Ed., 2003, XP Professional, 2000 Server</li> </ul> <p><b>NET::SFTP (uses Net::SSH::Perl)</b></p> <ul style="list-style-type: none"> <li>Linux</li> </ul> <p><b>OpenSSH for sftp</b></p> <ul style="list-style-type: none"> <li>MVS; OS X v.10.3 or higher; Solaris; UNIX; Windows; z/OS v.1.4 or higher</li> </ul> <p><b>PuTTY PSCAP and PSFTP</b></p> <ul style="list-style-type: none"> <li>Windows, Windows NT for Alpha</li> </ul> <p><b>Rbrowser</b></p> <ul style="list-style-type: none"> <li>OS X v.10.3 or higher</li> </ul> <p><b>SouthRiver Technologies WebDrive</b></p> <ul style="list-style-type: none"> <li>Windows</li> </ul> <p><b>SSH FileSystem (SSHFS)</b></p> <ul style="list-style-type: none"> <li>Unix (requires OpenSSH and FUSE)</li> </ul> <p><b>SSH Secure Shell FTP</b></p> <ul style="list-style-type: none"> <li>Windows</li> </ul> <p><b>SSH Tectia Client</b></p> <ul style="list-style-type: none"> <li>AIX, HP-UX, Linux, Solaris, Windows</li> </ul> <p><b>SSH Tectia Connector</b></p> <ul style="list-style-type: none"> <li>Windows</li> </ul> |
| <b>AS2 and AS3 (SSL) Clients</b>   |   |

|  |  |
|--|--|
| <p>Clients that are AS2 or AS3 certified by Drummond will be compatible with MOVEit TRANSFER, including:</p> <p><b>MOVEit Central</b></p> <ul style="list-style-type: none"> <li>Windows Vista Business Ed., 2003, XP Professional, 2000 Server</li> </ul>   | <p><b>Stairways Interarchy</b></p> <ul style="list-style-type: none"> <li>OS X</li> </ul> <p><b>Transmit</b></p> <ul style="list-style-type: none"> <li>OS X v.10.3 or higher</li> </ul> <p><b>WinSCP</b> (in SFTP mode)</p> <ul style="list-style-type: none"> <li>Windows</li> </ul>   |
| <p><b>FTPS (FTP over SSL) Clients</b></p> <p><b>TRANSFERbTrade TDAccess</b></p> <ul style="list-style-type: none"> <li>AIX, AS/400, HP-UX, Linux, MVS, Solaris, Windows</li> </ul> <p><b>C-Kermit FTP</b></p> <ul style="list-style-type: none"> <li>AIX, QNX, UNIX, VMS</li> </ul> <p><b>Cleo LexiCom</b></p> <ul style="list-style-type: none"> <li>AS/400, Linux, UNIX, Windows</li> </ul> <p><b>cURL</b></p> <ul style="list-style-type: none"> <li>AIX; AmigaOS; BeOS; DOS; DragonFly BSD; FreeBSD; HPUX; Linux; NetBSD; NetWare; OpenBSD; OS/2; OS X; QNX; RISC OS; Solaris; SunOS; Tru64 UNIX; UNIXware; VMS; Windows</li> </ul> <p><b>FileZilla</b></p> <ul style="list-style-type: none"> <li>Windows</li> </ul> <p><b>GlobalSCAPE CuteFTP Pro</b></p> <ul style="list-style-type: none"> <li>Windows</li> </ul> <p><b>GLUB Secure file transfer</b></p> <ul style="list-style-type: none"> <li>Java</li> </ul> <p><b>IBM z/OS Secure Sockets FTP</b></p> <ul style="list-style-type: none"> <li>z/OS</li> </ul> <p><b>IniCom FlashFXP</b> (GUI v.3.0 or higher)</p> <ul style="list-style-type: none"> <li>Windows</li> </ul> <p><b>Ipswitch WS_FTP Pro</b> (GUI v.7.0 or higher)</p> <ul style="list-style-type: none"> <li>Windows</li> </ul> <p><b>LFTP</b></p> <ul style="list-style-type: none"> <li>AIX, MVS, Solaris, UNIX</li> </ul> <p><b>MOVEit Buddy</b></p> <ul style="list-style-type: none"> <li>Windows Vista Business Ed., 2003, XP, 2000, ME, 98, NT</li> </ul> | <p><b>FTPS (FTP over SSL) Clients, Cont.</b></p> <p><b>MOVEit Central</b></p> <ul style="list-style-type: none"> <li>Windows Vista Business Ed., 2003, XP Professional, 2000 Server</li> </ul> <p><b>MOVEit Freely</b></p> <ul style="list-style-type: none"> <li>Windows Vista Business Ed., 2003, XP, 2000, ME, 98, NT</li> </ul> <p><b>Netkit</b></p> <ul style="list-style-type: none"> <li>Linux, Solaris, UNIX</li> </ul> <p><b>Rhino Voyager FTP</b></p> <ul style="list-style-type: none"> <li>Windows</li> </ul> <p><b>Seagull Secure file transfer Pro</b></p> <ul style="list-style-type: none"> <li>Windows</li> </ul> <p><b>SmartFTP</b></p> <ul style="list-style-type: none"> <li>Windows</li> </ul> <p><b>SouthRiver Technologies WebDrive</b></p> <ul style="list-style-type: none"> <li>Windows</li> </ul> <p><b>Stairways Interarchy</b></p> <ul style="list-style-type: none"> <li>OS X</li> </ul> <p><b>Sterling Commerce Connect:Direct Enterprise Command Line Client</b></p> <ul style="list-style-type: none"> <li>UNIX, Windows</li> </ul> <p><b>Surge SSLFTP</b></p> <ul style="list-style-type: none"> <li>FreeBSD; Linux; Macintosh; Solaris; Windows</li> </ul> <p><b>TrailBlazer ZMOD</b></p> <ul style="list-style-type: none"> <li>OS/400</li> </ul> <p><b>Tumbleweed SecureTransport Clients</b></p> <ul style="list-style-type: none"> <li>UNIX, Windows</li> </ul> <p><b>in software IP*Works SSL</b></p> <p>Windows</p> |

## Passwords

**Log in Credentials:** In order to receive your authorized user log in credentials all Trading Partners, regardless of submission method, must be enrolled with NH Medicaid and approved as Trading Partners on the NH Health Enterprise MMIS. Log in credentials include names/ids and passwords, that will be required for the submission of transactions to NH Medicaid.

**Trading Partner ID:** The Trading Partner ID links the Trading Partner to their transaction data and is the NH Health Enterprise MMISs internal key to accessing their Trading Partner information. Please have this number available each time you contact the Conduent New Hampshire Provider Relations Unit at **1 (866) 291-1674** or at **(603) 223-4774** (local). **The following login credentials are issued depending on the chosen communication method.**

**Web Portal User ID/Password:** This Web Portal User ID allows Trading Partners access to the New Hampshire MMIS Health Enterprise Portal for functions that include file submission and file retrieval. The Conduent New Hampshire Provider Relations Unit also uses the logon name to access Web Portal data submissions.

**Secure file transfer ID/Password:** These are the login credentials for the Conduent DMZ site. These allow FTP Trading Partners to access assigned folders for file submission or to retrieve responses. The Conduent New Hampshire Provider Relations Unit also uses this Secure file transfer ID to reference your DMZ data submissions.

# 5 Contact Information

## EDI Customer Service

The Conduent New Hampshire Provider Relations Unit is available to all New Hampshire Medicaid Trading Partners, Monday through Friday from 8:00 a.m. to 5:00 p.m., Eastern Standard Time, at the following numbers:

**Toll Free: 1 (866) 291-1674**

**Local: (603) 223-4774**

## EDI Technical Assistance

The Conduent New Hampshire Provider Relations Unit assists users with questions about electronic submissions. The Conduent New Hampshire Provider Relations Unit is available to all New Hampshire Medicaid Trading Partners, Monday through Friday from 8:00 a.m. to 5:00 p.m., Eastern Standard Time, at **1 (866) 291-1674** (toll-free) or **(603) 223-4774** (local). The Provider Relations Unit specializes in the following:

- Provides information on available services
- Creates user accounts for file submission for approved Trading Partners
- Verifies receipt of electronic transmissions
- Provides assistance to Trading Partners experiencing transmission difficulties

## Provider Services Number

The Conduent New Hampshire Provider Relations Unit is available to all New Hampshire Medicaid Trading Partners, Monday through Friday from 8:00 a.m. to 5:00 p.m., Eastern Standard Time, at **1 (866) 291-1674** (toll-free) or **(603) 223-4774** (local).

## Applicable Web site/E-mail

Please visit [www.nhmmis.nh.gov](http://www.nhmmis.nh.gov) for NH Medicaid provider and Trading Partner services information, including Trading Partner enrollment information, FAQs, manuals and related documentation.

# 6 Control Segments/ Envelopes

## ISA-IEA

Conduent EDI Solutions will create the Interchange Control Segments to validate the Interchange Envelope of each ASC X12 outbound file. The ISA table provides sender and receiver codes, authorization and delimiter information.

| TR3 Page                                | Loop     | Segment | Data Element | Industry Name                       | Comments  |
|---|----------|---------|--------------|-------------------------------------|---|
| <b>Interchange Control Header (ISA)</b> |          |         |              |                                     |   |
| C.3                                     | Envelope | ISA     | 01           | Authorization Information Qualifier | 00  |
| C.4                                     | Envelope | ISA     | 06           | Interchange Sender ID               | 026000618   |
| C.5                                     | Envelope | ISA     | 08           | Interchange Receiver ID             | Trading Partner ID assigned by New Hampshire Medicaid |
| C.6                                     | Envelope | ISA     | 16           | Component Element Separator         | :   |

## GS-GE

Conduent EDI Solutions creates single or multiple functional groups within an X12 file.

| TR3 Page                            | Loop     | Segment | Data Element | Industry Name             | Comments  |
|-------------------------------------|----------|---------|--------------|---------------------------|-----------|
| <b>Functional Group Header (GS)</b> |          |         |              |                           |           |
| C.7                                 | Envelope | GS      | 02           | Application Sender's Code | 026000618 |

| TR3 Page | Loop     | Segment | Data Element | Industry Name               | Comments                                   |
|----------|----------|---------|--------------|-----------------------------|--|
| C.7      | Envelope | GS      | 03           | Application Receiver's Code | Trading Partner ID assigned by NH Medicaid |

## ST-SE

Conduent EDI Solutions creates a unique Transaction Set Control Number in the ST02. The ST02 value should match the SE02 value. Should a file contain multiple ST to SE Transaction Sets, each transaction set control number may not be duplicated within the same interchange (ISA to IEA).

| TR3 Page                                 | Loop             | Segment | Data Element | Industry Name                  | Comments                   |
|--|------------------|---------|--------------|--------------------------------|----------------------------|
| <b>Transaction Set Header (ST to SE)</b> |                  |         |              |                                |                            |
| 68                                       | Functional Group | ST      | 02           | Transaction Set Control Number | Refer to the X12 TR3 Guide |
| <b>Transaction Set Trailer (SE)</b>      |                  |         |              |                                |                            |
| 228                                      | Functional Group | SE      | 02           | Transaction Set Control Number | Refer to the X12 TR3 Guide |

# 7 New Hampshire Medicaid Specific Business Rules and Limitations

Many of the data elements detailed in this Companion Guide reflect New Hampshire business requirements, but still meet the standard requirements in the ASC X12N Implementation Guide. Inclusion of a “business-required” data field, as defined by this Companion Guide, will aid in the delivery of a positive response from the New Hampshire Health Enterprise MMIS. For more information regarding New Hampshire specific billing requirements, consult the applicable NH Medicaid provider billing manual, which can be downloaded from the New Hampshire Medicaid Web site at: <http://nhmmis.nh.gov>

**Note on decimal/amount fields:** Even though the X12N transaction defines Amount fields as having an 18-byte maximum, there is an additional HIPAA rule that limits all decimal fields to a maximum of 10 characters, including the two implied or reported decimal places. Accordingly, for all decimal or amount fields:

- “123456789012” is not an acceptable amount, because it is greater than 10 bytes.
- “12345678.90” is acceptable because the number of digits is not greater than 10; the decimal point itself is not limited by the rule.
- However, “1234567890” is not acceptable because the X12N engine assumes that a decimal point and succeeding zeroes are implied so that the actual number being communicated is “1234567890.00”, which is greater than 10 bytes.
- The 10-byte limitation applies to all decimal or amount fields, including AMT segments, but also including any other fields that hold amounts or decimals, such as 837 SV207, CAS03, CAS06, CAS09, CAS12, CAS15, CAS18, HI01-5, HI02-5, HCP02 and HCP03, etc.

For all fields not listed in these bullets, follow the guidelines in the ASC X12N Implementation Guides (TR3), available at <http://store.x12.org/store/healthcare-5010-consolidated-guides>

# 8 Acknowledgements and/or Reports

## Transmission Errors and Reports

The 835 is an outbound transaction, so New Hampshire Trading Partners will not receive any acknowledgements or reports.

# 9 Trading Partner Agreements

Prior to engaging in EDI with the New Hampshire MMIS Enterprise, prospective Trading Partners must complete a Trading Partner enrollment package, which includes a Trading Partner Signature Agreement Form that requires an original signature. Please follow all enrollment instructions and mail the signed Trading Partner Agreement Form to the Conduent NH Medicaid Fiscal Agent, along with any other required documents to complete the enrollment application process.

Please find all New Hampshire Provider/Trading Partner Enrollment information at: <https://nhmmis.nh.gov/portals/wps/portal/ProviderEnrollment>

The mailing address is:

Conduent Provider Relations Unit  
P. O. Box 2059  
Concord, NH 03302-2059

## Trading Partners

In simple terms, an EDI Trading Partner is defined as any provider or agent acting on behalf of the provider that transmits electronic transaction data to or receives electronic transaction data from a health plan.

There are two different types of Trading Partners from the New Hampshire Medicaid:

First, there are Vendors, Billing Agents, Clearinghouses and Switch Vendors who engage in Electronic Data Interchange (EDI) which may include claims and eligibility inquiries on behalf of enrolled NH Medicaid providers. These Trading Partners are not enrolled providers, their only interaction with the MMIS is to submit and retrieve electronic data files.

Second, there are providers re-enrolling under the Medicaid Program who use their own software programs to engage in Electronic Data Interchange (EDI) with the New Hampshire Medicaid. Some providers may use the MMIS online file upload and retrieval features via the New Hampshire MMIS Health Enterprise Portal.

# 10 Transaction Specific Information

This section contains data clarifications, including New Hampshire-specific data requirements. For additional guidance on the use of business rules, please see [Section 7 New Hampshire Medicaid Specific Business Rules and Limitations](#)

## ASC X12N 835 Health Care Claim Payment/Advice

| TR3 Page                                | Loop | Segment | Data Element | Industry Name                  | Comments                            |
|---|------|---------|--------------|--------------------------------|-------------------------------------|
| <b>Interchange Control Header (ISA)</b> |      |         |              |                                |                                     |
| C.4                                     | N/A  | ISA     | 05           | Security Information Qualifier | ZZ                                  |
| C.4                                     | N/A  | ISA     | 07           | Interchange ID Qualifier       | ZZ                                  |
| <b>Financial Information (BPR)</b>      |      |         |              |                                |                                     |
| 70                                      | N/A  | BPR     | 01           | Transaction Handling Code      | I<br>H                              |
| 72                                      | N/A  | BPR     | 04           | Payment Method Code            | CHK<br>ACH<br>NON                   |
| 72                                      | N/A  | BPR     | 05           | Payment Format Code            | If BPR04 = ACH, value is CCP        |
| 73                                      | N/A  | BPR     | 06           | (DFI) ID Number Qualifier      | If BPR04 = ACH, value is 01         |
| 74                                      | N/A  | BPR     | 10           | Originating Company Identifier | If BPR04 = ACH, value is 1026000618 |
| 75                                      | N/A  | BPR     | 12           | (DFI) ID Number Qualifier      | If BPR04 = ACH, value is 01         |

| TR3 Page   | Loop  | Segment | Data Element | Industry Name                  | Comments  |
|--|-------|---------|--------------|--------------------------------|---|
| 76   | N/A   | BPR     | 14           | Account Number Qualifier       | If BPR04 = ACH, value is DA   |
| <b>Reassociation Trace Numbers (TRN)</b>         |       |         |              |                                |   |
| 77   | N/A   | TRN     | 02           | Check Or EFT Trace Number      | New Hampshire Medicaid will populate with the Check or EFT Trace Number as applicable. This Number will help the providers re-associate the ERA's with the corresponding EFT's. |
| 78   | N/A   | TRN     | 03           | Originating Company Identifier | 1026000618  |
| <b>Receiver Identification (REF)</b>             |       |         |              |                                |   |
| 82   | N/A   | REF     | 02           | Receiver Identification        | New Hampshire Assigned Trading Partner ID   |
| <b>Payer Identification (N1)</b>                 |       |         |              |                                |   |
| 87   | 1000A | N1      | 02           | Payer Name                     | NH Medicaid   |
| <b>Payer Business Contact Information (PER)</b>  |       |         |              |                                |   |
| 95   | 1000A | PER     | 02           | Name                           | Conduent State Healthcare, LLC  |
| 95   | 1000A | PER     | 03           | Communication Number Qualifier | TE  |
| 95   | 1000A | PER     | 04           | Communication Number           | 6032234774  |
| 96   | 1000A | PER     | 05           | Communication Number Qualifier | TE  |
| 96   | 1000A | PER     | 06           | Communication Number           | 8662911674  |
| <b>Payer Technical Contact Information (PER)</b> |       |         |              |                                |   |
| 98   | 1000A | PER     | 02           | Name                           | Conduent State Healthcare, LLC  |
| 98   | 1000A | PER     | 03           | Communication Number Qualifier | TE  |
| 98   | 1000A | PER     | 04           | Communication Number           | 6032234774  |

| TR3 Page                                     | Loop  | Segment | Data Element | Industry Name                      | Comments   |
|--|-------|---------|--------------|------------------------------------|--|
| 98   | 1000A | PER     | 05           | Communication Number Qualifier     | TE   |
| 99   | 1000A | PER     | 06           | Communication Number               | 8662911674   |
| 99   | 1000A | PER     | 07           | Communication Number Qualifier     | EM   |
| 99   | 1000A | PER     | 07           | Communication Number               | <a href="mailto:NHMMISED@Conduent.com">NHMMISED@Conduent.com</a> |
| <b>Payee Identification (N1)</b>             |       |         |              |                                    |  |
| 103  | 1000B | N1      | 03           | Identification Code Qualifier      | XX<br>FI   |
| <b>Payee Additional Identification (REF)</b> |       |         |              |                                    |  |
| 107  | 1000B | REF     | 01           | Reference Identification Qualifier | If N103 = XX , value is TJ                                       |
| <b>Claim Payment Information (CLP)</b>       |       |         |              |                                    |  |
| 124  | 2100  | CLP     | 02           | Claim Status Code                  | 1<br>2<br>4  |
| 126  | 2100  | CLP     | 06           | Claim Filing Indicator Code        | MC   |
| <b>Patient Name (NM1)</b>                    |       |         |              |                                    |  |
| 139  | 2100  | NM1     | 08           | Identification Code Qualifier      | MI   |
| 139  | 2100  | NM1     | 09           | Subscriber Identifier              | NH Hampshire Medicaid ID   |
| <b>Corrected Priority Payer Name (NM1)</b>   |       |         |              |                                    |  |
| 154  | 2100  | NM1     | 08           | Identification Code Qualifier      | PI   |

| TR3 Page | Loop | Segment | Data Element | Industry Name                                  | Comments   |
|----------|------|---------|--------------|--|--|
| 154      | 2100 | NM1     | 09           | Corrected Priority Payer Identification Number | The 10 digit Carrier Code assigned by NH Medicaid is sent when NH Medicaid has priority payers on the file and the claim does not indicate that the priority payer has processed it yet. The Carrier Code List is available at <a href="http://nhmmis.nh.gov">http://nhmmis.nh.gov</a> |

| TR3 Page                                    | Loop | Segment | Data Element | Industry Name                 | Comments   |
|---|------|---------|--------------|-------------------------------|--|
| <b>Other Subscriber Name (NM1)</b>          |      |         |              |                               |  |
| 158   | 2100 | NM1     | 08           | Identification Code Qualifier | MI   |
| 158   | 2100 | NM1     | 09           | Other Subscriber Identifier   | Other Subscriber Insurance Policy ID will be sent if Corrected Priority Payer Name (NM109) is sent |
| <b>Claim Supplemental Information (AMT)</b> |      |         |              |                               |  |
| 182   | 2100 | AMT     | 01           | Amount Qualifier              | AU   |
| <b>Provider Level Adjustment (PLB)</b>      |      |         |              |                               |  |
| 219   | N/A  | PLB     | 03-1         | Adjustment Reason Code        | 90<br>E3<br>GO<br>IR<br>LS<br>PL   |

## EFT and ERA Re-association:

Provider will need to contact its financial institution/bank to arrange for the delivery of the information from the CCD+ EFT that is necessary for successful re-association of the EFT payment with the ERA remittance advice. The information that the bank must return is as follows:

| CORE-required Minimum CCD+ Re-association Data Elements |         | Corresponding v5010 X12 835 Data Elements |  |
|---|---------|---|--|
| CCD+ Record #   | Field # | Field Name                                | Data Element Segment Position, Number & Name                     |
| 5   | 9       | Effective Entry Date                      | BPR16-373 Date (EFT Effective Date)                              |
| 6   | 6       | Amount                                    | BPR02-782 Monetary Amount (Total Actual Provider Payment Amount) |
| 7   | 3       | Payment Related Information               | TRN Re-association Trace Number Segment                          |

# Appendices

## Implementation Checklist

Conduent does not offer an Implementation Checklist for our Trading Partner EDI services with the New Hampshire Medicaid. The Conduent New Hampshire Provider Relations Unit assists new Trading Partners with enrollment and testing, but a formal implementation checklist is not necessary.

## Business Scenarios

Please contact the Conduent New Hampshire Provider Relations Unit to discuss your specific EDI related business needs with New Hampshire Medicaid, should they not be covered in this guide or other available New Hampshire Medicaid X12N transaction companion guides.

## Transmission Examples

Please contact the Conduent New Hampshire Provider Relations Unit for any question regarding transmission examples.

## Frequently Asked Questions

For current Provider and Trading Partner FAQs, please visit the following page:  
<https://nhmmis.nh.gov/portals/wps/portal/ProviderFaq>

# Change Summary

| Version | Date       | Description   | Description of Changes   |
|---------|------------|---|--|
| 1.0     | 01/24/2013 | Initial Document for Deliverables                       | Document reformatted to meet CAQH CORE standard companion guide format (Phase I CORE Req. 152). Conduent branding applied. |
| 1.1     | 11/21/2013 | URL for Carrier Codes                                   | Updated carrier Code URL on page 23  |
| 1.1     | 11/27/2013 | URL for Provider Enrollment                             | Updated URL for Provider Enrollment on page 3  |
| 1.2     | 12/23/2013 | Updated Trading Partner notice for downtime             | Updated Section 2 page 3 for Trading Partner notice  |
| 1.3     | 02/28/2014 | Updated Process Flow diagram                            | Updated Process Flow Section 4 page 5  |
| 1.4     | 06/01/2014 | Updated Legend Information                              | Updated Legend information on page 6   |
| 1.5     | 05/08/2015 | 6 Control Segments/ Envelopes                           | Updated GS-GE segment statement page 17  |
| 1.5     | 05/08/2015 | 2 Getting Started – Working with New Hampshire Medicaid | Updated scheduled maintenance periods page 3   |
| 1.6     | 05/14/2015 | Non-routine downtime                                    | Added the description related to the process for displaying the Non-routine downtime page 3.                               |
| 1.6     | 05/14/2015 | EFT and ERA Re-association                              | Added a new section 'EFT and ERA Re-association' to mention the process related to re-association page 27.                 |
| 1.7     | 8/28/2017  | Rebrand updates   | Updated the brand to Conduent  |
|         |            |   |  |